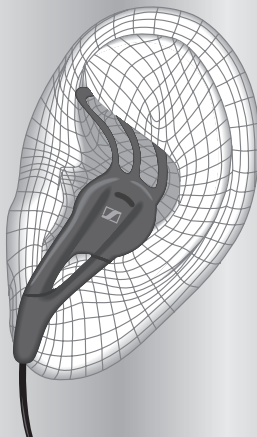




 **SENNHEISER**

CX 680 SPORTS



Instruction manual



Important safety instructions

In order to prevent damage to health:

- ▶ Set the volume to a low level before inserting the earphones into your ears.
- ▶ Avoid listening at high volume levels for long periods of time.

The earphones contain magnets that generate a magnetic field which could cause interference with cardiac pacemakers and implanted defibrillators.

- ▶ Keep the earphones at least 1.2" (3 cm) from cardiac pacemakers or implanted defibrillators.

In order to prevent accidents:

- ▶ Do not wear the earphones in an environment that requires your special attention (e.g. in traffic).
- ▶ Keep the earphones and accessory parts out of reach of children.

In order to prevent damage to the earphones:

- ▶ Do not heat the earphones (hairdryer, heating, extended exposure to sunlight, etc.).
- ▶ Do not store wet earphones in a bag.

Delivery includes

1 pair of CX 680 Sports ear canal phones

3 pairs of ear adapters
(size **S**, **M**, **L**)



3 pairs of EarFins
(size **S**, **M**, **L**)



1 pair of housing covers



1 pair of spare diaphragm
guards



1 cleaning tool

1 extension cable with volume control

1 cable clip

1 storage pouch

1 instruction manual

Sound quality and correct fit

WARNING Hearing damage due to high volumes!



Listening at high volume levels for long periods can lead to permanent hearing defects.

▶ Avoid listening at high volume levels for long periods of time.

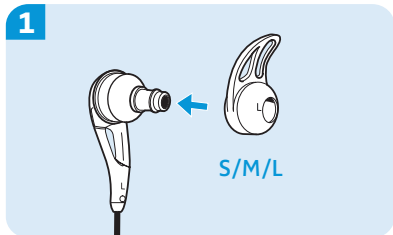
Use the earphones:

- With EarFins during sports activities
- Without EarFins during normal daily use

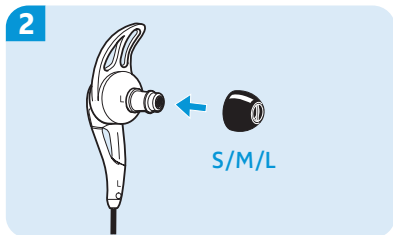
The ear adapters must seal your ear canals in order to obtain the optimum sound and so that the earphones are perfectly seated. Select the size that fits your ears.

Using EarFins during sports activities

To ensure that the earphones are securely seated during sports activities:



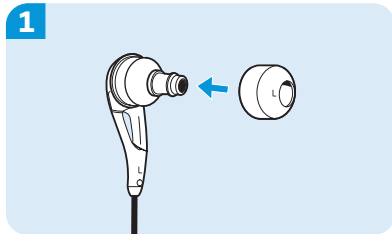
- ▶ Select the correct size of EarFins and attach them to the earphones (1). Observe the "L" (left) and "R" (right) markings on the earphones and EarFins.



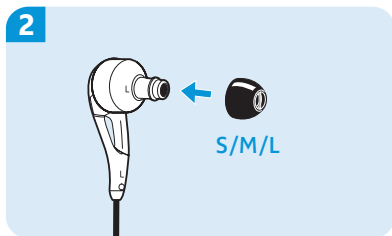
- ▶ Select the ear adapters to fit your ears.
- ▶ Attach the ear adapters to the earphones.

Daily use without EarFins

To adjust the earphones for daily use:



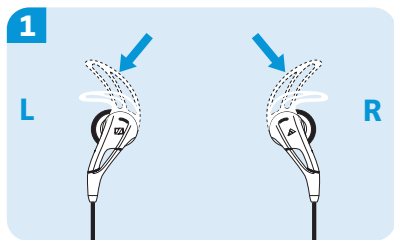
- ▶ Attach the housing covers to the earphones.



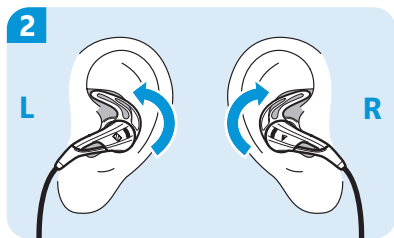
- ▶ Select the ear adapters to fit your ears.
- ▶ Attach the ear adapters to the earphones.

Inserting into the ears

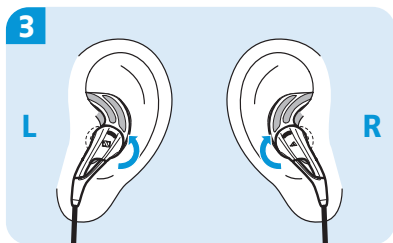
To use the earphones with EarFins:



▶ Slightly press the EarFins down.



▶ With the EarFins pressed down, insert the earphones into your ear.



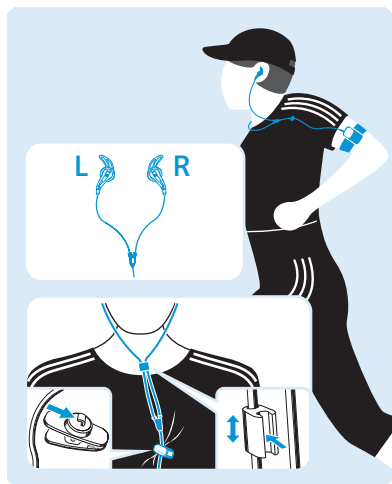
▶ Release the EarFins and position the earphones so that a comfortable and snug fit is ensured.

Optimum cable routing

- ▶ Ensure that the cable is routed close to the body, but that your freedom of movement is not restricted.

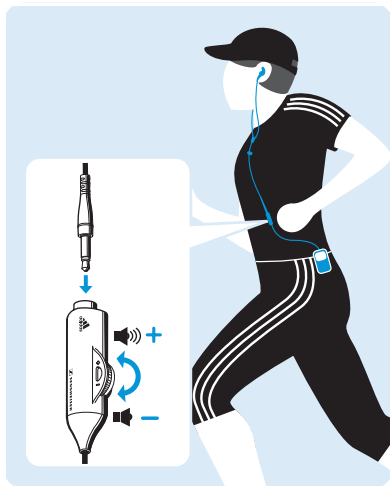
To relieve cable strain and reduce body sound:

- ▶ Use the supplied cable clip.



Adjusting the volume

- ▶ Use the supplied extension cable with volume control if you want to wear your audio source e.g. attached to your waistband.



Cleaning the earphones

CAUTION

Danger of damage to the earphones!

Contact with any liquid under pressure or extended contact with any liquid can cause it to seep into the earphone housing resulting in damage to the earphone.

- ▶ Do not use any solvents or cleansing agents.
 - ▶ Do not immerse the earphones into water for extended periods of time.
 - ▶ Do not expose the earphones to excessive water pressure.
-
- ▶ Use a cloth to carefully remove buildup from the earphones and ear adapters.

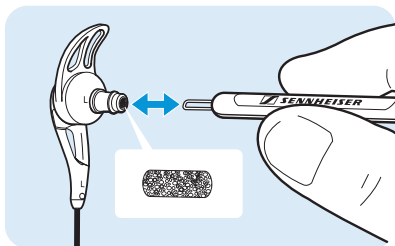
Or:


- ▶ Carefully rinse the earphones under lukewarm running water.
- ▶ Then allow the earphones to air dry at room temperature.

Replacing the diaphragm guards

The diaphragm guards protect the diaphragms of the earphones and contribute to the sound quality of the earphones. Ensure that the diaphragm guards are always installed in the earphones.

- ▶ Replace dirty diaphragm guards using the cleaning tool or tweezers.



 Accessory parts are available from your Sennheiser partner. To find your Sennheiser partner, please visit our website at www.sennheiser.com > Service & Support > Service Partners.

Specifications

Frequency response 18 to 20,000 Hz

SPL 120 dB
(1kHz/1Vrms)

Impedance 16 Ω

Weight Approx. 10 g


Manufacturer

Declarations

Warranty

Sennheiser GmbH & Co. KG gives a warranty of 24 months on this product. For the current warranty conditions, please visit our website at www.sennheiser.com under "Service & Support" or contact your Sennheiser partner.

Declaration of Conformity

 This product is in compliance with the essential requirements and other relevant provisions of directives: EMC 2004/108/EC, RoHS 2002/95/EC, WEEE 2002/96/EC.

WEEE Declaration



Please dispose of this product by taking it to your local collection point or recycling center for such equipment.

The declarations are available at www.sennheiser.com.



Sennheiser electronic GmbH & Co. KG
Am Labor 1
30900 Wedemark
Germany
www.sennheiser.com

Printed in China
Publ. 10/09, A01